

QuickClick SEPARATOR



 **Cen-Tec[®]
Systems**

(appearance may vary slightly)

System Start-Up



CONSIDER SAFETY PRACTICES, INSTALLATION AND MAINTENANCE INSTRUCTIONS FOR YOUR WET/DRY VACUUM'S OWNER'S MANUAL BEFORE ASSEMBLING AND USING THE QUICK CLICK SEPARATOR

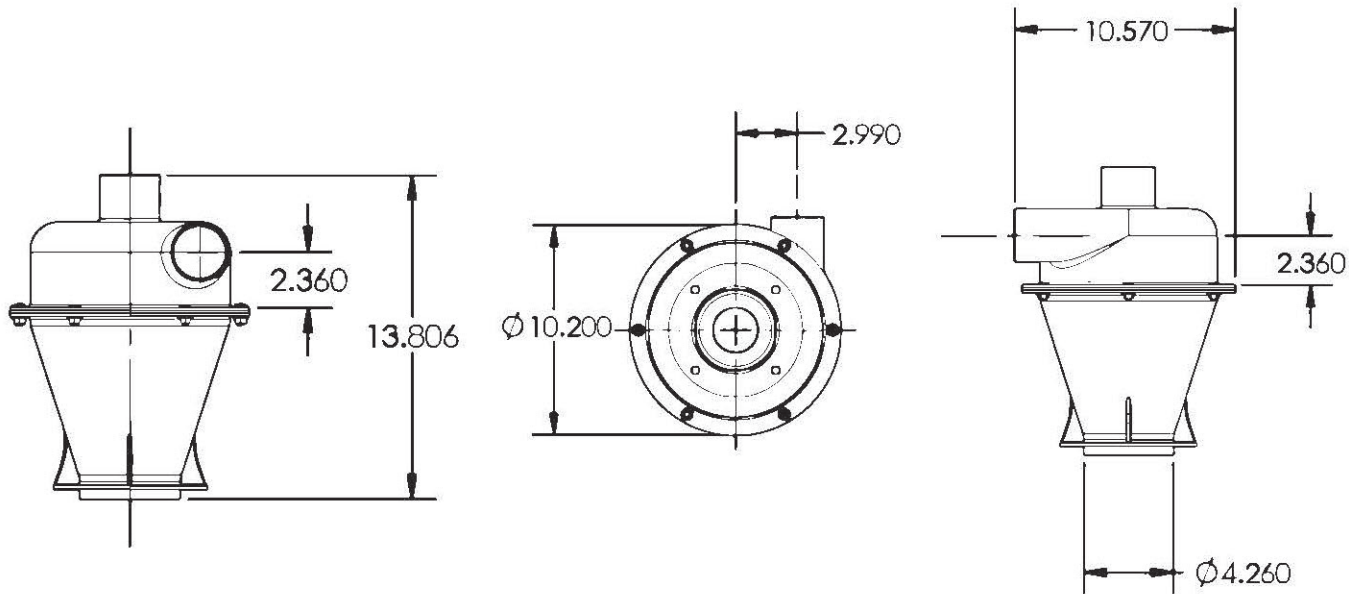
1. Do not vacuum anything that is burning or smoking, such as cigarettes, matches, hot ashes or any hot substance!
2. Do not use the separator near flammable or combustible liquids, gases, or explosive dusts, such as gasoline or other fuels, lighter fluid, cleaners, oil-based paints, natural gas, hydrogen, coal dust, magnesium dust, grain dust, aluminum dust, sugar dust, flour dust, gun powder, or other combustibles.
3. To reduce the risk of health hazards from vapors or dusts, do not vacuum toxic materials unless a HEPA filter vacuum is used. Taking care of disposal is necessary to protect the user.
4. Wood dust mixtures are highly flammable and can be explosive. NEVER introduce sparks or sources of ignition into collector.
 - Empty drum after each use.
 - Ground system.
5. NEVER leave wood dust in a building or vehicle.
6. Keep fire extinguishers handy at all times.
7. Can be used for collecting non-flammable liquids.
8. Dispose of waste in a FIRE SAFE AREA.



SOME DUSTS ARE HIGHLY FLAMMABLE OR EXPLOSIVE. LEARN/KNOW WHAT YOU ARE DEALING WITH. FOLLOW ALL LOCAL, STATE, FEDERAL, AND NFPA CODES AND GUIDE LINES.

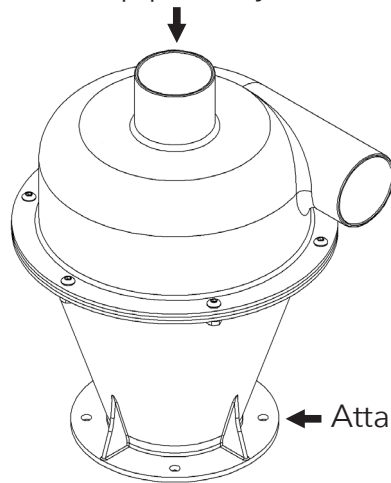
Separator Dimensions

Dimensions subject to slight variations in manufacturing.



Tool / Vacuum Connection

Connect the top port to your vacuum.



Assembly Instructions

1. Draw 4.25" diameter circle on your supplied lid. Carefully cut out 4.25" hole in lid. Use 5/16" drill bit to drill bolt holes.

Note: Use the Gasket for reference.

2. Turn the Quick Click separator upside-down. Place the gasket on the base of the separator and align all the holes. Place the topside of the supplied lid against gasket and align all the holes. Secure the separator, gasket and lid together using four bolts and four flange nuts.

Note: Thoroughly tighten hardware to eliminate air leaks.

3. Put the Quick Click separator and lid on top of your dust container and seal it airtight.

Note: We recommend a drum or container that will withstand the vacuum pressure, otherwise the container may collapse when in use. The larger the container the sturdier the walls must be to prevent collapse.

4. Make sure there are no air leaks at the connections.

Note: Any air leak in the lid or drum may affect separation performance. Make sure to check your dust drum frequently so you do not overfill it.

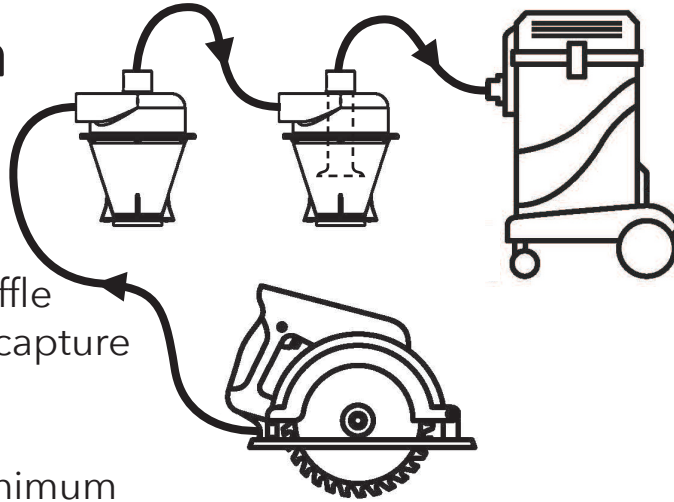
5. Consider use of an air flow regulator to reduce vacuum sealing.

Multiple Separators

Staged Filtration

Increases particle efficiency and helps in very fine dust situations.

You can also remove the baffle inside the first separator to capture large and fine debris.

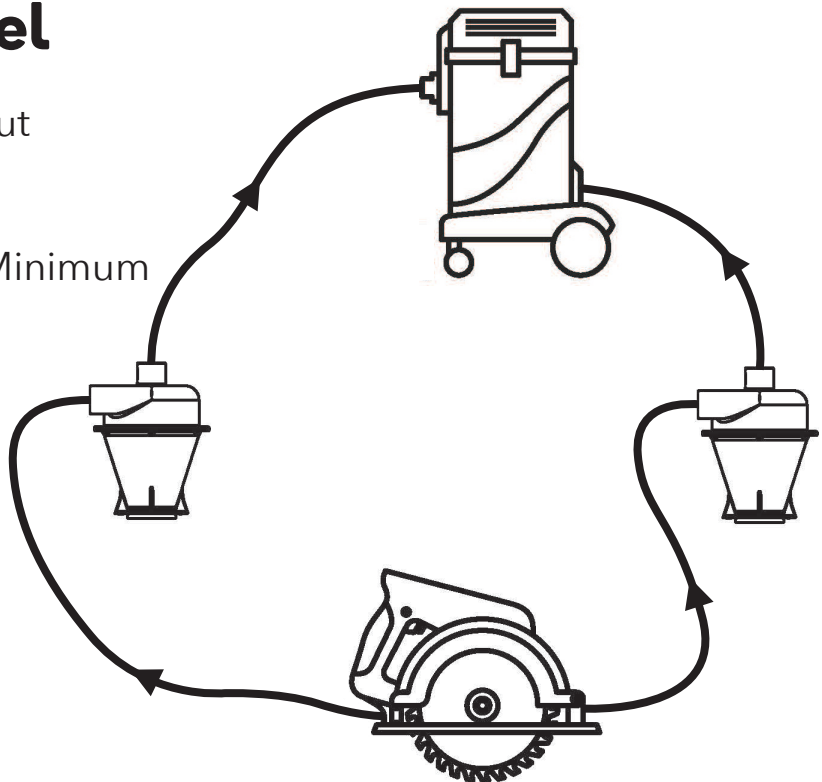


Ideal Solution: 140 CFM Minimum
160 CFM+ Optimal

Attach in Parallel

Same particle efficiency but increases the CFM.

Ideal Solution: 140 CFM Minimum
160 CFM+ Optimal



Accessories

| Part Number | Part Description |
|-------------|--|
| 94698 | 10 Foot Quick Click Hose Adapter Kit |
| 94709 | 16 Foot Quick Click Hose Adapter Kit |
| 94720 | 20 Foot Quick Click Hose Adapter Kit |
| 94731 | 30 Foot Quick Click Hose Adapter Kit |
| 99296 | 10 Foot 7-Piece Quick Click Hose & Adapter Kit |
| 99307 | 16 Foot 7-Piece Quick Click Hose & Adapter Kit |
| 99318 | 20 Foot 7-Piece Quick Click Hose & Adapter Kit |
| 99329 | 30 Foot 7-Piece Quick Click Hose & Adapter Kit |
| 99076 | FEIN Turbo I Vacuum |
| 42203 | FEIN Turbo II X AC HEPA Vacuum |
| 99087 | Quick Click Linking Hose |
| 98020 | 1.5 Inch Linking Hose & Adapter Collection |
| 98031 | 2 Inch Linking Hose & Adapter Collection |



94698



99296



98020



42203

Troubleshooting

| Problem | Cause | Solution |
|--|---------------------------------|--|
| Not separating well. | Air leaks in the system | <ol style="list-style-type: none">1. Check for leaks between the lid and dust drum.2. Check for holes or leaks in the dust drum.3. Check for leaks along the gasket of the Quick Click. |
| Material swirls in Quick Click and won't drop into the dust container. | | |
| Material swirls in Quick Click and won't drop into the dust container. | Collecting large bulky material | <ol style="list-style-type: none">1. Large, bulkier material might swirl. Restart or temporarily cut off air flow to drop material down.2. Consider removing the baffle if situation persists. |
| Low air volume | System clogged | <ol style="list-style-type: none">1. Clean vacuum and the vacuum filter per the manufacturer's specs.2. Check all hose connections for a blockage in the hose. |
| Drum collapsing | Blocked airflow | Ensure at least one gate is open during operation of your dust collector to prevent system sealing. |
| Hose pulling off | Hose connections not tight | <ol style="list-style-type: none">1. Due to the varied hose diameters, couplers can be used. The are available at centecsystems.com2. Use a hose clamp if connecting hose over the separation ports.3. Securing the hose can be effected with a sheet metal screw if a permanent connection is desired. |

QuickClick SEPARATOR

Thank you for your purchase from our Quick Click series of dust collection accessories!

Our intention is your complete satisfaction with your purchase. We welcome comments, questions and suggestions on the items you have purchased related to their suitability in your application.

You can email inquiries to **customerservice@centecsystems.com** or if preferred call us at **1-800-833-2822** during normal business hours 8:00 am to 5:00 pm CST Monday to Friday.

Warranty Information

Cen-Tec Systems Standard Warranty Provisions. 2 years domestic, 90 days in commercial use.

Subject to the conditions and exceptions stated in this warranty, Cen-Tec Systems warrants the products sold by Cen-Tec Systems to be free from defects in materials and workmanship under normal residential use and service for two (2) years and/or 90 days in commercial application of the original contract or invoice. A copy of the original bill of sale must accompany all warranty requests. If one is not produced as required the manufacturers date code will not be used.



centecsystems.com
1-800-833-2822