

LIMITED WARRANTY

Subject to the conditions and exceptions stated in this warranty Cen-Tec Systems warrants the products sold by Cen-Tec Systems to be free from defects in materials and workmanship under normal residential use and service for one (1) year from the date of delivery on presentation of the original contract or invoice. A copy of the original bill of sale must accompany all warranty requests. If one is not produced as required the manufactures date code will be used.

CONTACT INFORMATION



1807 Morrissey Drive
Bloomington, Illinois 61704

PHONE: (309) 664-0328
TOLL FREE: (800) 833-2822
FAX: (309) 663-8766

EMAIL: help@centecsystems.com
WEBSITE: www.centecsystems.com
www.centeccommercial.com



CT-10 Response Manual

Safety instructions



WARNING

Electric shock could occur if used out doors or on wet surfaces.

Please read all instructions before using this Electric Powerhead.

Save these instructions. INTENDED FOR HOUSEHOLD USE ONLY.

CT-10 Response

Premium Electric Power Brush

This power brush is used to vacuum carpets and hard surfaces. It has a 10" edge to edge brushed head to create a wider cleaning path. It is to be used with the integrated telescopic wand.



Features include:

- **Quietdrive™ V-Belt** - Multi-grooved reinforced belt for continuous contact and efficient transfer of power to the brush.
- **Quick Wand Release** - For an easy switch from carpet to hard floor, edge cleaning or above floor cleaning.
- **Soft Bumper** - Wraps around brush to protect baseboards and furniture.
- **Active Brush Edge Cleaner** - Guide either side of the brush along base boards or next to furniture to help remove dirt trapped at carpet edges.

- 1) Unplug and disconnect power before servicing.
- 2) Always turn off this appliance before connecting or disconnecting either hose or motorized nozzle.
- 3) Do not pick up anything that is burning or smoking, such as cigarettes, matches or hot ashes.
- 4) Use only as described in this manual. Use only manufacturers recommended attachments.
- 5) Do not unplug by pulling on cord. to unplug, grasp the plug, not the cord.
- 6) Do not handle system or appliances with wet hands.
- 7) Turn off all controls before unplugging.
- 8) Do not use with damaged cord or plug. If appliance is not working as it should, has been dropped, damaged, left outdoors, or dropped into water, return it to distributor.
- 9) Do not allow to be used as a toy. Close attention is necessary when used by or near small children.
- 10) The hose contains electrical wires. Do not use if damaged, cut or punctured. Avoid picking up sharp objects.
- 11) Do not put any object into openings.
- 12) Do not use with any opening blocked; keep free of dust, lint, hair, and anything that may reduce air flow.
- 13) Keep hair, loose clothing, fingers, and all parts of the body away from openngs and moving parts.
- 14) Do not leave vacuum or brush when plugged in. Unplug from outlet when not in use and before servicing.
- 15) Do not pick up flammable or combustible liquids such as gasoline or use it in areas where they may be present.
- 16) Use extra care when cleaning on stairs.

Cen-Tec CT-10 00 Electric Brush Parts Explosion List

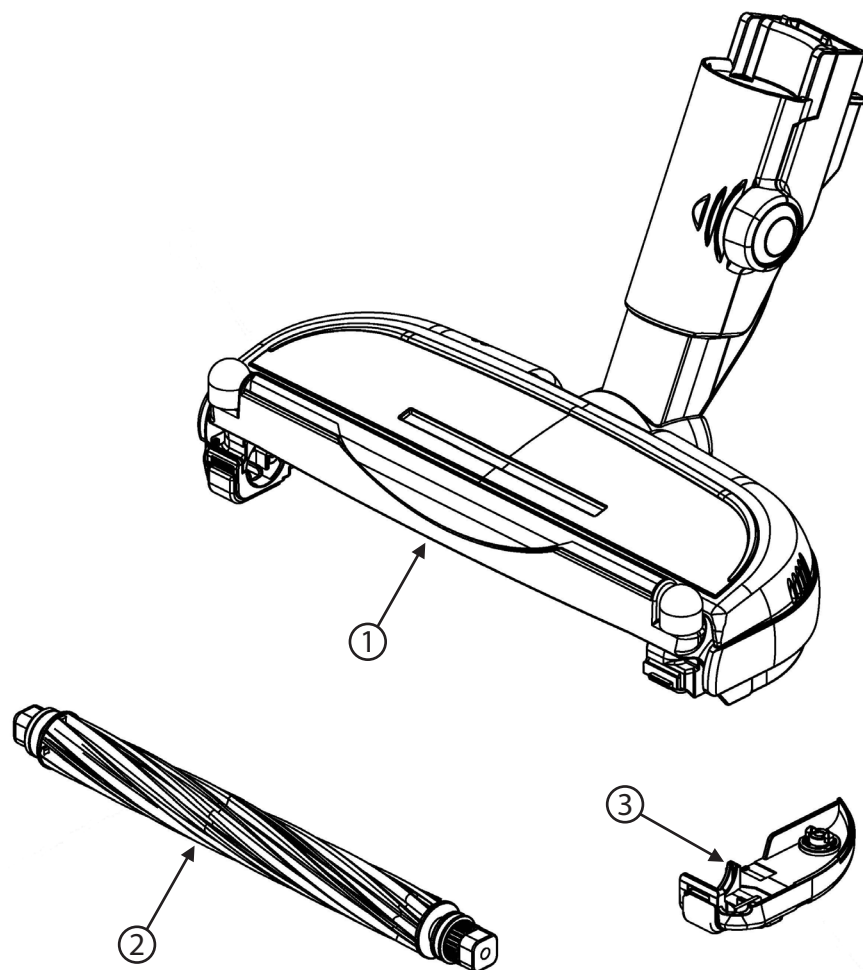
ASSEMBLY NUMBER		C50XEBE00000	C50XECG00000	C50ECV00000
REVISION		D	D	D
VENDOR		535	535	535
ITEM NO.	PART NAME	PART NUMBER	PART NUMBER	PART NUMBER
1	POWER NOZZLE UNIT	C85PEBE00000	C85PECG00000	C85PECV00000
2	AGITATOR ASSEMBLY	C92SEBE00000	C92SEBE00000	C92SEBE00000
3	BELT COVER	C43SEBE00000	C43SEBE00000	C43SEBE00000
---	PACKAGING OPTION	OPTION2	OPTION 1	OPTION 2

NOTES:

1. REFER TO B.O.M. FOR COMPLETE LIST OF PART NUMBERS, COLORS & QUALITIES.
2. AGITATOR, WHEELS, SHUTTER AND SHUTTER ROLLERS TO ROTATE FREELY.
3. SWIVEL MUST ROTATE FREELY. THROUGH ALL THREE DETENT POSITIONS. WITH AUDIBLE CLICK AT THE 0° AND 180° POSITION.
4. WITH NOZZLE CONNECTED TO C99PDXE EXTENSION WAND UNIT. BUTTON MUST RELEASE THE LOCK SMOOTHLY AND WITH UNDUE NOISE.
5. SUPPLIER QUALITY SYSTEM MUST CONFORM TO QI-742-2**.
6. A. THIS COMPONENT OR ASSEMBLY (INCLUDING RAW MATERIALS) MUST COMPLY WITH THE PANASONIC GROUP CHEMICAL SUBSTANCES ANAGEMENT RANK GUIDELINES (LATEST VERSION) : OF PANASONIC APPLIANCES COMPANY RECEIVING CONTROL GUIDLINES FOR PROHIBITED SUBSTANCES IN PRODUCT.
B. RED AND/OR YELLOW TAPE AND PAINT THAT MAY REMAIN OR ADHERE IN THE FINAL PRODUCT SHOULD NOT BE USED.

Cen-Tec CT-10 00

Electric Brush Parts Explosion



Vacuuming tips

Suggested Sweeping Pattern

For best cleaning action, the powerhead should be pushed straight away from you and pulled straight back. At the end of each pull stroke, the direction of the powerhead should be changed to point into the next section to be cleaned. This pattern should be continued across the carpet or floor with slow, gliding motions.



NOTE: Fast random strokes do not provide complete cleaning.



WARNING

Personal Injury and Product Damage Hazard

- DO NOT run over power cord with the powerhead. Personal injury or product damage could result.
- DO NOT pull plug from wall by the power cord. If there is damage to the cord or plug, personal injury or property damage could result.

Powerhead Steering

The nozzle swivel rotates left and right for improved maneuvering in tight spaces and around corners.

Under Furniture

To maximize the reach of the powerhead under furniture, turn the handle to either side and lower the wand close to the floor.



Edge Cleaning

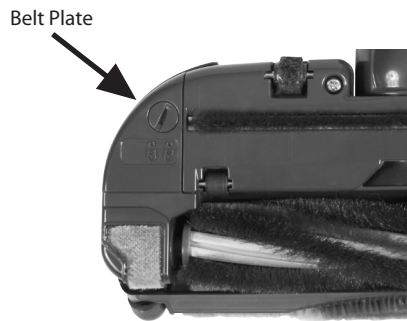
To clean the corners of the floor and wall press the powerhead against the wall until the shutter system is fully opened. On hard surfaces such as tile, linoleum, wood and stone it is possible to move the powerhead along the wall edge for easier cleaning. Carpet and area rugs may be more difficult.



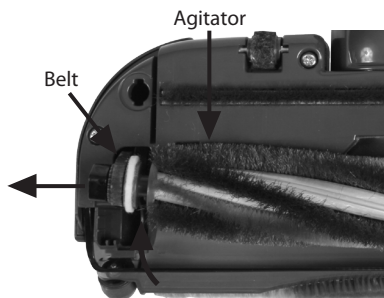
Belt & Agitator Changing/Replacement

To Replace Agitator

- 1) Turn the nozzle upside down and locate the belt plate shown below.
- 2) Turn the locking mechanism counter-clockwise to the unlock position and remove the belt plate from the nozzle.

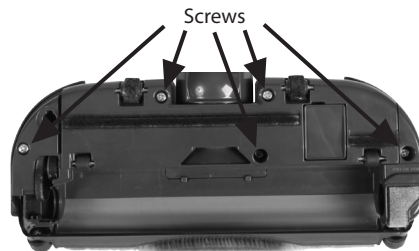


- 3) Lift the agitator on the belt connected end.
- 4) Pull the belt off of the agitator and remove the agitator from the nozzle.

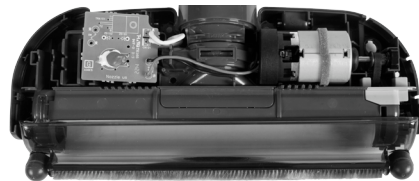


To Replace Belts

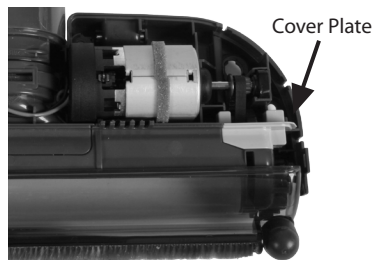
- 5) Remove the five screws from the bottom of the nozzle located below.



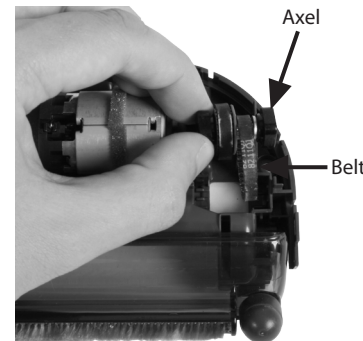
- 6) Turn the nozzle over and remove the top casing.



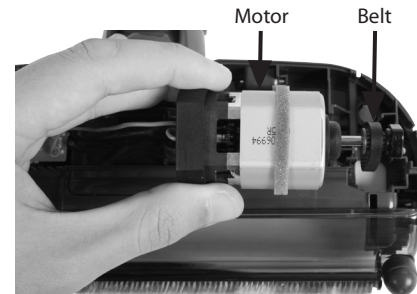
- 7) Remove the light gray cover plate shown below.



- 8) Carefully lift up the axel holding the belts and remove the axel and agitator belt.



- 9) Lift up the motor to replace the second belt.



- 10) To put the nozzle back together follow the steps in reverse order (9 to 1).

Agitator Cleaning

To Clean Agitator

NOTE: In order to keep cleaning efficiency high and to prevent damage to your powerhead, the agitator must be cleaned every time the belt is changed. The agitator must also be cleaned according to the following schedule.

<u>Vacuum Cleaner Use</u>	<u>Clean Agitator</u>
HEAVY - (used daily)	every week
MODERATE - (used 2-3 times/week)	every month
LIGHT - (used 1 time/week)	every 2 months

IMPORTANT

Disconnect powerhead from electrical outlet. Check and remove hair, string and lint build-up frequently in the powerhead agitator and end cap areas.

Remove any dirt or debris in the belt path area or in the brush roller area. Carefully remove string or debris located on the agitator or end caps.

Agitator Assembly

